

# CANCER SCYLLARUS.



## CHARACTER GENERICUS.

*Pedes* octo (rarius sex aut decem;) insuper manus duæ chelatæ.

*Oculi* duo, distantes, plurimis pedunculati; elongati, mobiles.

*Cauda* articulata, inermis.

## CHARACTER SPECIFICUS, &c.

CANCER macrourus articularis, manibus adactylis, ventricosis rectis angulatis introrsum tridentatis.

*Lin. Syst. Nat.* p. 1054.

SQUILLA arenaria.

*Seb. mus.* 3. t. 20. f. 6.

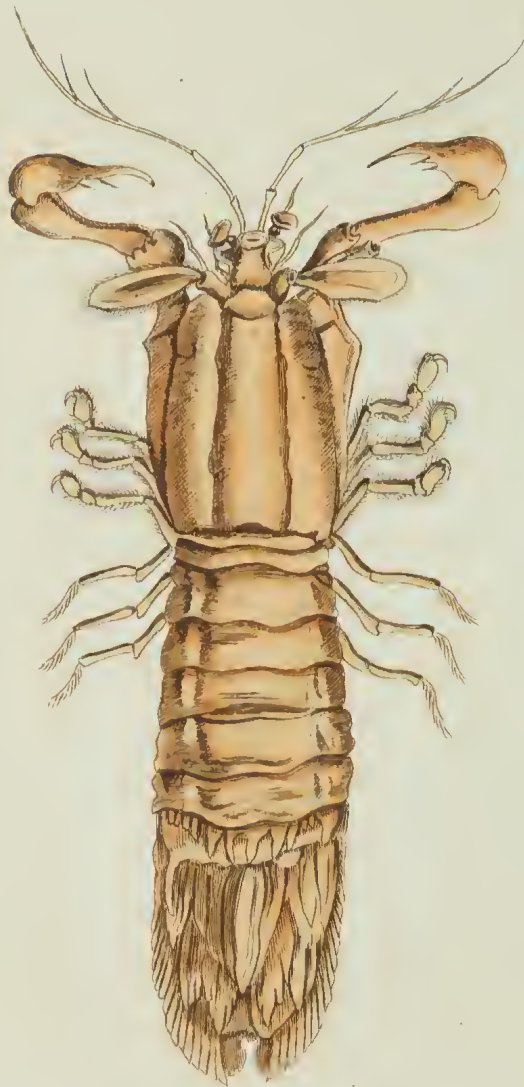
---

Cancro *Manti*, quem in opere hoc nostro non ita pridem repræsentavimus, licet longe minor sit Cancer *Scyllarus*, in aliis tamen conjungi videtur cum eo propinqua cognatione. In maribus enutritur Indicis,





648



RDY

THE  
OVAL-TAILED CRAB.



*GENERIC CHARACTER.*

*Legs* generally eight, (in some species six or ten,) besides two claspers or chelated arms.

*Eyes* two, commonly distant; footstalked, moveable.

*Tail* jointed.

*SPECIFIC CHARACTER, &c.*

Long-tailed many-jointed CRAB, with adactyle, ventricose, strait, angular arms, tridentated on the inner side.

*Rumph. mus. t. 3. f. F.*

---

This species, though of much smaller size, is very nearly allied in point of general resemblance to the Cancer Mantis lately figured in the present work, and is a native of the Indian seas.